

Better Homes and Gardens Special Interest Publications.

BEAUTIFUL KITCHENS

Timeless Neutrals

23 Palettes
To Love Forever p. 7

Gorgeous Copper
Fixtures p. 14

BONUS:
Color Guide
With Every
Kitchen

Everyday Elegance

Smart Ways to Blend Comfort,
Function, and Style p. 16

WINTER 2009
Display until February 9

\$7.99 U.S.



KitchenBathIdeas.com

BIG SIP Green Checkout





Antique White | Slate | Sable | Tomato | The Palette

Pas de Deux

Designer and client step in perfect harmony and create a kitchen of extraordinary beauty and expressive style.

Larry Pratt's kitchen features a carefully orchestrated mix of textures and exquisite details, all expressed in a subtly shifting palette of neutrals that blends old-world warmth with contemporary energy.

Writer: John Riha | Photographer: Gordon Beall
Field editor: Eileen Doymier



Right: Vertical surfaces in the kitchen proper wear a mix of tile. Two sizes of tumbled tiles accented with decorative bands accompany tile window casing with a framed display of tiles above.

Below: Speckled creamy granite called Santa Cecilia tops perimeter cabinets. The double edge of the countertop characterizes the extraordinary level of detail throughout the kitchen.

Opposite: The hand-plastered range hood draws the eye and warms the expansive space. Differing styles and colors of cabinets and granite countertops supply artful dramatic tension.

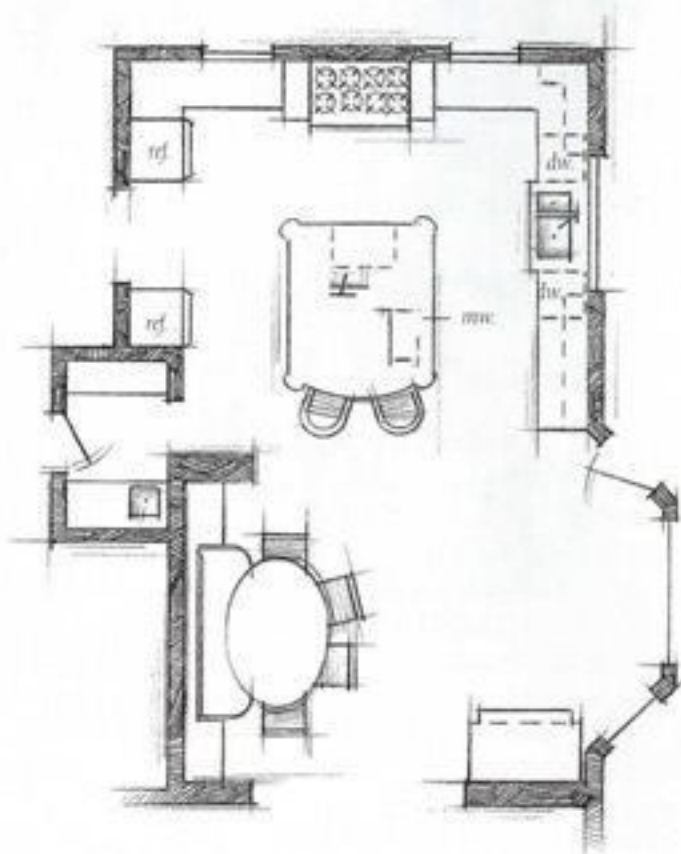


Years as a mortgage banker in Virginia had allowed Larry Pratt to explore and evaluate hundreds of commercial and residential properties. With an eye toward one day building a house that would express his sensibilities, Larry remained keenly aware of details and moments of inspiration that any property might provide—a well-wrought molding detail or the way a countertop was configured—and tucked each idea in his personal style file.

"Building my house has been a goal of mine since I was a boy," Larry says. "I saw it as an opportunity to express my ideas and creativity."

He knew exactly what he wanted, but not how to make the dream a reality. He needed an interior designer who would intuit his ensemble of ideas and translate them into a style he describes as "a little conflicted-traditional but not traditionalist, with a bit of cosmopolitan edginess."

Having lived in Europe and studied the decorative arts and interior architecture, Arlene Critzos, founder of the Annapolis design firm Interior Concepts, Inc., understood Larry's desire



to balance old-world warmth with expressive details and contemporary flair. "I don't have a signature style," Critzos says. "What I do is listen and listen, then listen some more."

As the two walked through Critzos' company's 40,000-square-foot warehouse filled with furnishings and accessories, they pulled out items to discuss. The conversation not only provided Critzos with a wealth of information but also established a basis of trust that would be invaluable through a design phase that would last a year.

Although Critzos designed the entire McLean, Virginia, residence, the kitchen became the anchor for the larger scheme, establishing color and texture for the home. As such, Critzos established a restful, neutral palette, replete with the charm and over-the-top details Larry wanted. The expansive 28x18-foot space also serves as a keeping room, with informal and formal dining areas and a sitting area.

Throughout, exquisite materials and extraordinary artistry dominate. A substantial range hood embellished with hand-worked plaster and decorative tiles serves as a focal point for the kitchen. The walls feature two sizes of tumbled

Above Left: Inspired by a built-in trough sink he saw in a commercial kitchen countertop, Larry designed a similar convenience in the island so guests have ready access to refreshments.

Above: The farmhouse sink features Art Nouveau styling.

Opposite: The flooring of limestone tiles with cobbled edges unifies the kitchen and accompanying dining and sitting areas. The sensuous crown molding gives the ceiling a raison d'être.



stone tiles divided by a band of diamond-shape tiles around the perimeter of the working space. The English-style cabinets wear Antique White with a Chocolate glaze, while an island of French walnut steadies the room with its deep brown hue. Expressive yet comfortable furnishings, perfectly punctuated with well-chosen accessories, complete the tableau.

"It was a wonderful collaboration and a joy to work with Arlene," Larry says. "The kitchen is so beautiful that sometimes I'll look around and admire it, forgetting that it's really mine."

RESOURCES BEGIN ON PAGE 116

Below: The cozy sitting area includes an upholstered love seat and inviting cane-end-rattan chair. The unique end table is an antique multidrawer storage chest once used to hold nails in a hardware store. The stately red cabinet houses a TV.

Opposite: The dining area features built-in cabinets flanking a banquette covered in an oak-color chenille backed by a Tomato Red accent wall. Critzos designed the table—a pair of stone pedestals topped with an oval of polished soapstone.

Antique White

Date

Sable

Tomato

The Palette

DREAMY NEUTRALS
A neutral base of creams and sandy taupes takes visual energy from the natural variations in the slate stone tiles and the deep architectural detailing.

THE ACCENTS
The dark-walnut island anchors the room's neutral scheme accented with hints of Sable and Tomato in furnishings and wall colors.

Perimeter cabinetry: Custom glazed, Antique White with Chocolate glaze

Wall tiles: Tumbled field stone, Durango Stone

Wall accent tiles: Adriano Deco (6-inch), Raven Hill Hammered Dot (1-inch), Fontine Linear, Melange Flouge field tile (2x4-inch), Walker Zanger

Floor: Field tile, elesusstone.com

Dining nook wall: Flower Pot (6834), Sherwin Williams

Sitting room wall: Moose Point (8715D), Duron



