

CHESAPEAKE HOME

ChesapeakeHome.com

THE MID-ATLANTIC'S HOUSE AND GARDEN MAGAZINE

OCTOBER 2005

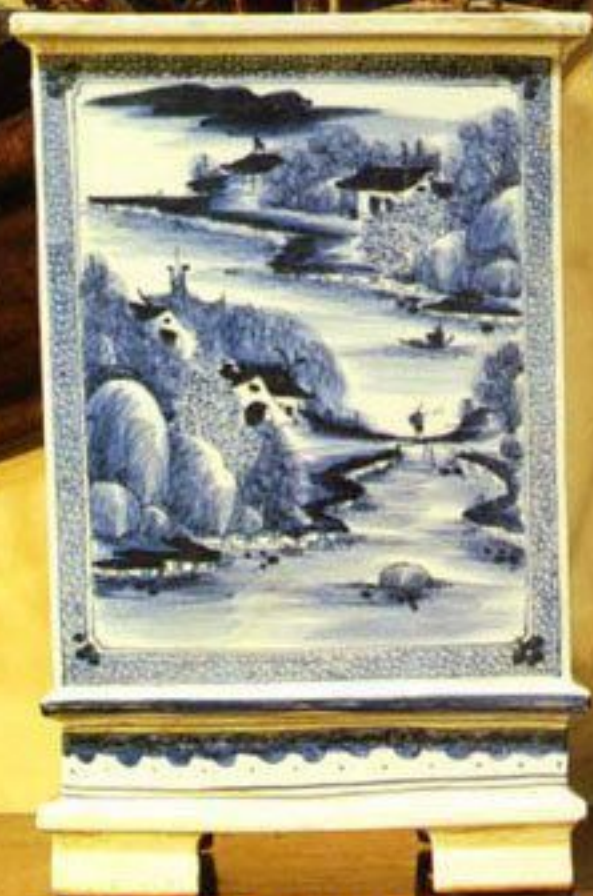
DRAB ^{to} FAB!

Identical homes get different

TALENT SHOW (house)

TOP DESIGNERS COLLABORATE

WINNER'S CIRCLE
INTERIOR DESIGN &
CUSTOM HOME AWARDS



GET COOKING!
KITCHEN APPLIANCE TRENDS

32 TREES
FOR GORGEOUS FALL COLOR

DISPLAY UNTIL NOVEMBER 15

\$4.95

10>



7 25274 98459 6



Situated on the Severn River in a critical area, the landscape for the Nantucket on the Severn Showhouse needed to comply with strict environmental regulations. Eric Blamphin of Exterior Image & Woodscape, Inc. directed landscape planning to achieve a plan sensitive to current laws. Blamphin also designed the buffer management plan to ensure that impervious surfaces would transition to the tidal water. He suggested an oyster shell path and native groundcover plantings to help convey the feeling of a coastal property. Chesapeake Conservation Services completed the landscape installation.

OPPOSITE:

A driving force to the entire house, the great room was designed to serve as both a living room and family room. Arlene Critzos and Joyce Pearl of Interior Concepts Inc. selected strong dramatic colors, large-scale jardinières, and a wing chair for a touch of formality. An eclectic mix of fabrics—from suede to chenille to simple cotton—and materials—from iron to painted wood to burlled walnut—infuses the room with a comfortable elegance. The seating arrangement, situated over an angled oriental rug that rests atop a sisal rug, adds interest and offers views of both the media cabinet inside and the waterfront outside. Antique blue and white English tiles accent the built-in cabinets, which house a wet bar, shelving, and electronics.

OPPOSITE AND THIS PAGE:
PHOTOGRAPHY BY ANNE GUMMERSON




ANATOMY OF A DECORATORS SHOWHOUSE

**Nantucket
on the
Severn**

BY LAUREN BROOKS

PHOTOGRAPHY BY ANNE GUMMERSON,
ALAN GILBERT, COYLE PHOTOGRAPHY



A two-story foyer with a cream and ochre color palette. The room features a round center table with a dark wood top and a turned pedestal. On the table sits a large, white ceramic vase with a grapevine relief. A tall, black, ornate lamp stands next to the table. The walls are decorated with framed artwork and a chair rail. A large window with a wooden frame and multiple panes is visible. A doorway on the left leads to another room with a blue sofa and a window with white curtains. The floor is dark wood with a patterned rug in the foreground.

A two-story foyer welcomes guests to the house with cheerful colors and breezy drapes framing the entry doors. To maintain a traditional symmetrical character, Arlene Critzos and Joyce Pearl of Interior Concepts Inc. positioned identical étagères to the left and right, accessorizing them with multi-colored glass balls. The designers also included an antique lamp post to add height to the design. A round center table provides an ideal setting for displays when the homeowner is entertaining. Cream and ochre cracked linen panels below the chair rail give the room texture and a "lived-in" aesthetic.

PHOTOGRAPHY BY ANNE GUMMERSON